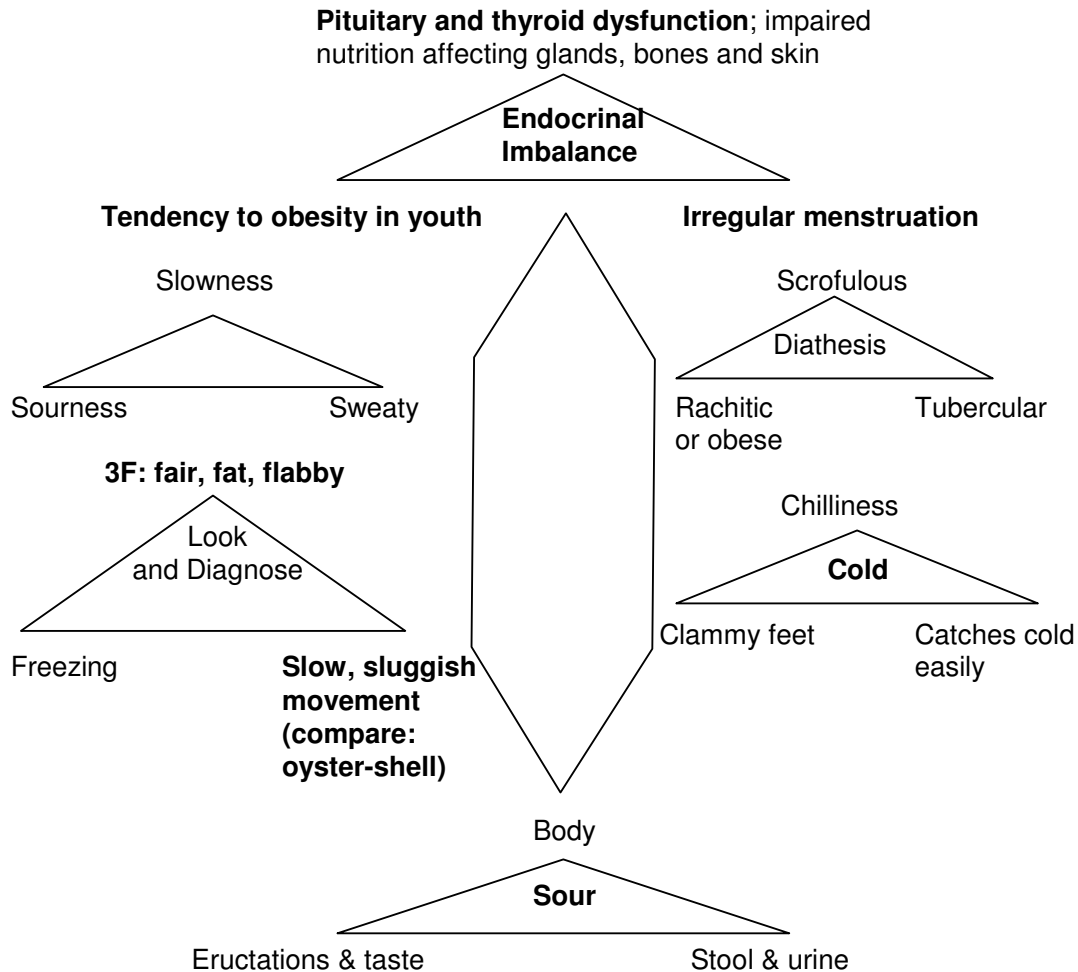




1) **CALCAREA CARB**

A. **PHYSICAL THEME**

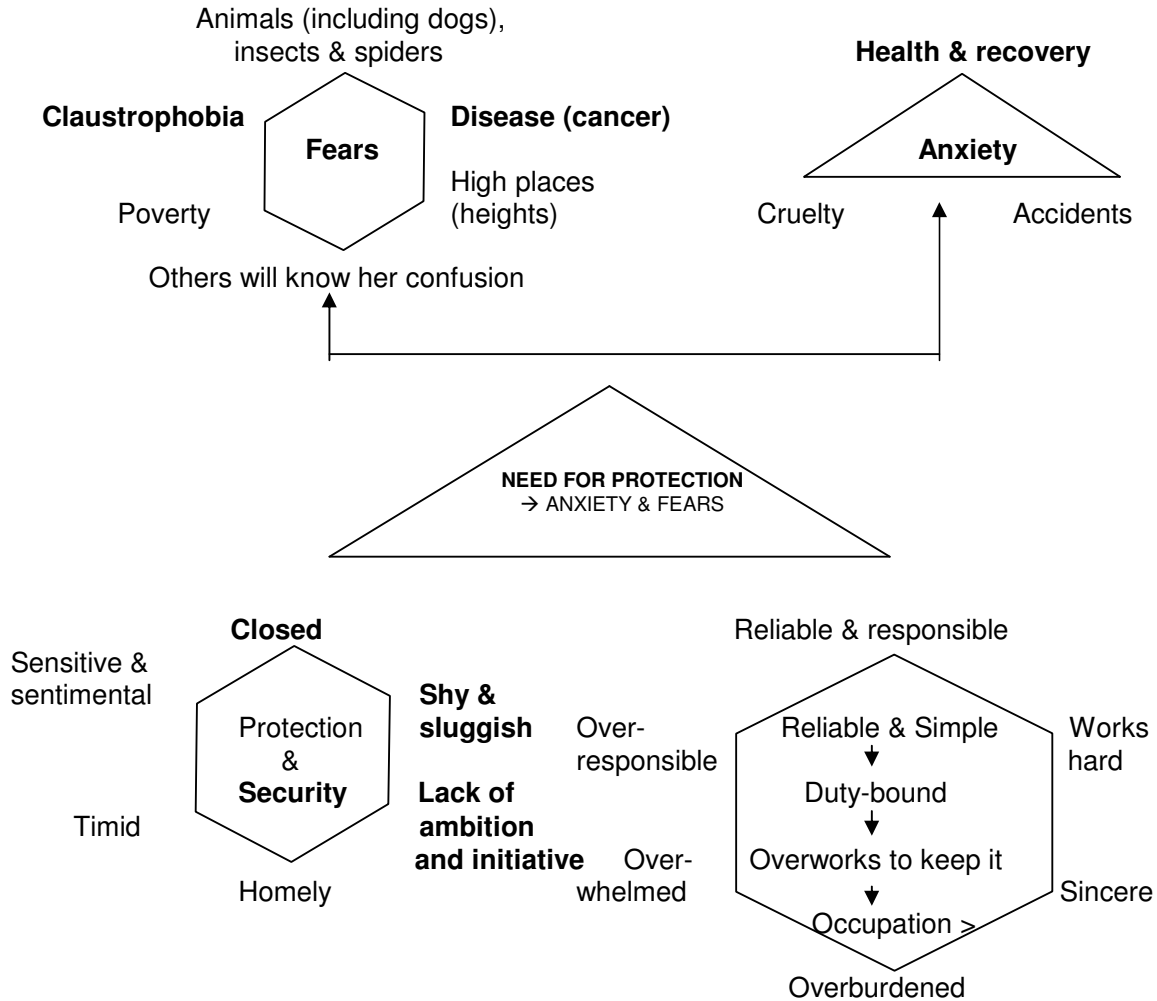


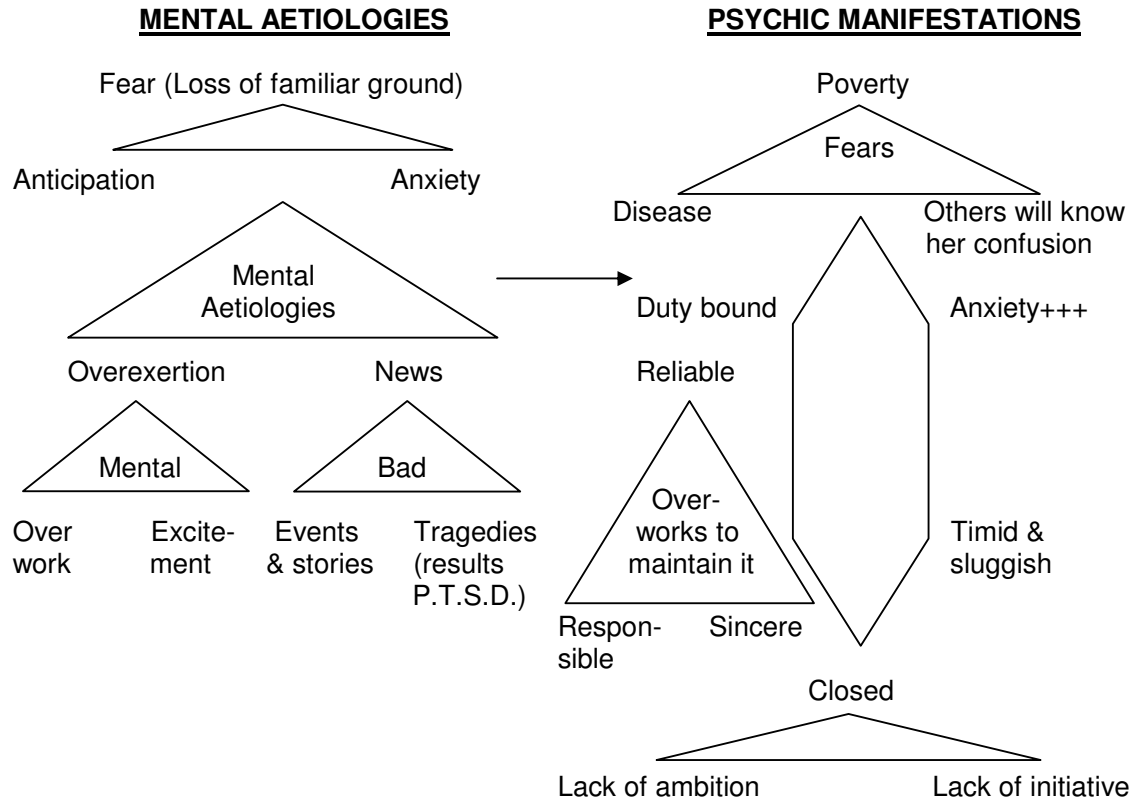
Physical Clinicals:

1. Obesity, Osteoporosis from hormonal incoordination esp. thyroid malfunction;
2. Osteo-arthritis;
3. Constipation;
4. Menstrual irregularities;
5. Chronic tonsillitis with delayed development in children;
6. Phelibitis with sluggish circulation in the aged;
7. Acidity and Chronic Gastritis.



B. **MENTAL ESSENCE**

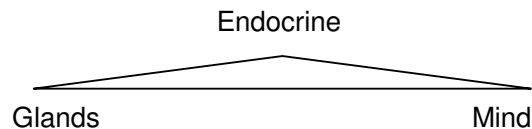




Mental Clinicals:

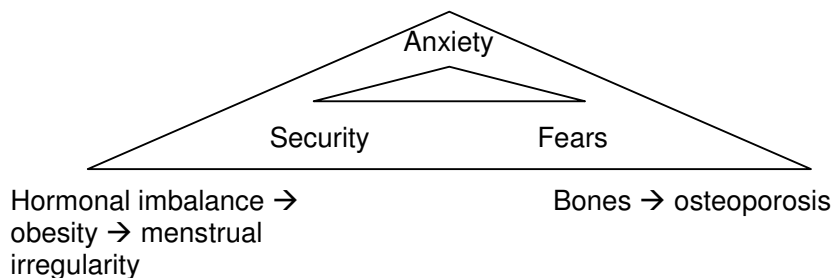
1. Anxiety neurosis;
2. Fear psychosis;
3. Lack of initiative.

C. SPHERE OF ACTION: WEAKEST LINKS



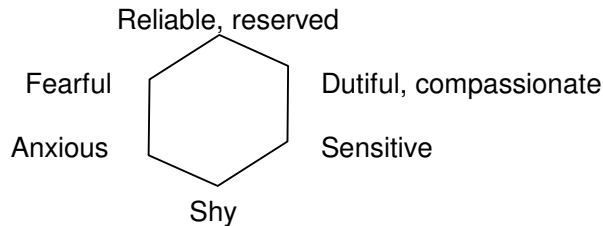
D. CATCH WORDS: KEYNOTES

4F: (fair, fat, flabby, freezing) → catches cold easily → tonsils





E. KEYWORDS FOR PERSONALITY PROFILE



F. POTENCY OF CHOICE

- i) Dentitional : 200C.
- ii) Enuresis : 30C.
- iii) Acidity : 200C.
- iv) Rheumatism : 200C.
- v) Respiratory : 30C.
- vi) Constitutional : 1M and higher.

Chronic medicine.

G. MIASMATICS OF CALCAREA CARB.

Miasmatics : Psora +++, Sycosis +++, Syphilis ++, Tubercular +

H. CLINICAL TIPS

Late teens → getting obese → hormonal irregularity → thyroid playing up → scanty and irregular period:
Calcarea Carb puts the system in order.

I. OTHER SALTS OF CALCAREA GROUP

(1) CALC. ACETICA & CALC. OXALICA :- Pains of cancer in Calc. constitution. (2) CALC. BROMATA :- Cerebral irritation, meningeal symptoms in Calc. constitution. (3) CALC. CAUSTICA :- Tearing pain in tendo achillis; sticking in corns, heel-pains: compresses allay inflammation. (4) CALC. FLUOR :- Bony growths, ulceration of bones, fistula, syphilitic periosteal swelling, threatening suppuration a marked indication. (5) CALC. IOD. :- Nodular tumours, movable, tender to touch, painful on moving arms. (6) CALC. OW TESTINE :- Leucorrhoea with backache, as if broken in two. (7) CALC. PHOS :- Emaciation of Phosphorus; green, slimy hot stool of Chamomilla; weakness of mental state and inability of mental exertion of Nat. mur; sinking sensation in stomach and prolapse uteri of Sepia. Predisposed to glandular and bone diseases, scrofulous, gouty constitution. (8) CALC. PICRICA :- Minute and excessively painful boils in meatus, with prostration and fatigue. (9) CALC. RENALIS :- After Berberis in renal calculus cases. (10) CALC. SILICA :- Strong syphilitic manifestations (viz. corneal ulcers, atrophy etc.) in Calc. constitution. (11) CALC. SULPH :- Suppurative case, after pus has found a vent, which is yellow thick & lumpy (yellow, serous & profuse later stages, Kali sulph.; sub-acute inflammation, fibrinous exudation with white or grey tongue – base coating, Kali mur). Calc. sulph is > in open air (reverse. Hepar sulph.).